



*Press Release*  
Press Contact:  
Christine Byrne  
+1 203 805 0432  
Christine.Byrne@bentley.com  
Follow us on Twitter:  
[@BentleySystems](https://twitter.com/BentleySystems)

## **Bentley Systems Announces Acquisition of EasyPower<sup>®</sup>, Leader in Power Systems Engineering Software**

*To Broadly Incorporate Electrical Modeling and Analysis across the Lifecycle of  
Infrastructure Digital Twins*

EXTON, Pa. – Feb. 23, 2023 – Bentley Systems, Incorporated (Nasdaq: BSY), the *infrastructure engineering software* company, today announced it has acquired EasyPower, a leading developer of design and analysis software tools, including arc flash solutions, for electrical engineering professionals. Since its founding in 1984, Portland, Oregon-based EasyPower has innovatively combined graphics-based modeling and analysis in order to make solving complex electrical engineering problems ever more straightforward and accessible. EasyPower products are primarily used for designing, analyzing, and monitoring power distribution systems serving industrial and commercial facilities, to ensure safety, reliability, and regulatory compliance.

Bentley’s acquisition of EasyPower, to extend integrated and iterative power systems design and analysis for infrastructure digital twins of every type, broadens its comprehensiveness in infrastructure engineering. With an increasingly electrified future and with disparate and widely distributed energy resources on both sides of “the meter,” all infrastructure assets will benefit – in performance, economics, safety and resilience – from continued simulation and assessment of power distribution conditions and designs over their project and operating lifecycles. Priorities for Bentley Systems will include integrating EasyPower’s schema and digital workflows with Bentley’s OpenBuildings, OpenFlows, OpenPlant, OpenRail, and Bentley Raceway and Cable Management applications.

CEO Greg Bentley said, “All infrastructure projects and assets have power distribution systems, which are too frequently analyzed using unnecessarily complicated software that is disconnected from 3D/4D BIM and digital twin workflows. By incorporating EasyPower within our design and modeling portfolio, and our iTwin Platform, we can help enable the distribution systems

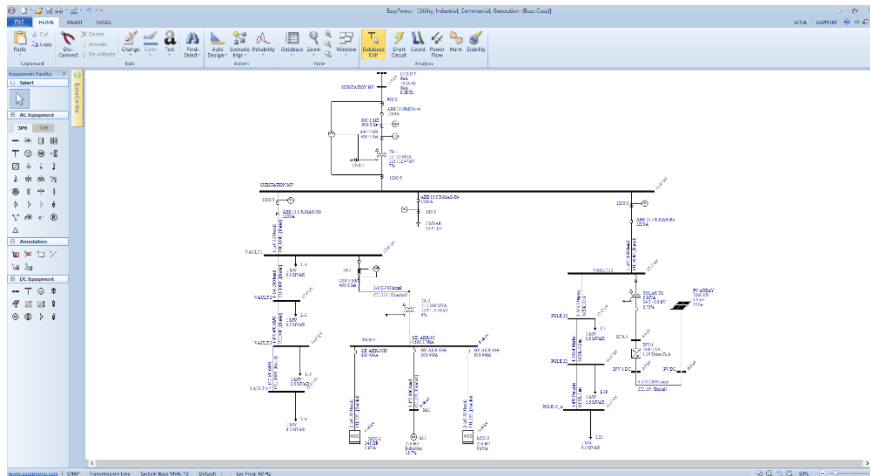
powering infrastructure to be more readily adapted to new imperatives for sustainability and resilience, while making electrical safety assurance more ubiquitous, accessible, and evergreen.”

EasyPower CEO Kevin Bates said, “We are delighted to be joining Bentley Systems at this point of inflection for electrical power in infrastructure, and in infrastructure digital twins. For nearly 40 years, EasyPower has been simplifying complex electrical engineering problems and helping our customers to confidently complete the job at hand. Our purpose has been to make electricity more accessible, more reliable, and safer to use. Within and for Bentley Systems, we can now substantially scale up EasyPower’s reach – across the world, across infrastructure sectors, and across digital twin lifecycles!”

The acquisition of EasyPower initially adds 45 expert colleagues in North America.

To learn more, visit [www.easypower.com](http://www.easypower.com).

### Image



EasyPower’s intuitive interface empowers users to digitize their electrical systems, and enables design, analysis, and optimization of complex electrical power distribution systems. *Image courtesy of Bentley Systems.*

### Video

EasyPower Automated Power System Design and Analysis.

##

### **About Bentley Systems**

Bentley Systems (Nasdaq: BSY) is the *infrastructure engineering software* company. We provide innovative software to advance the world's infrastructure – sustaining both the global economy and environment. Our industry-leading software solutions are used by professionals, and organizations of every size, for the design, construction, and operations of roads and bridges, rail and transit, water and wastewater, public works and utilities, buildings and campuses, mining, and industrial facilities. Our offerings include *MicroStation*-based applications for modeling and simulation, *ProjectWise* for project delivery, *AssetWise* for asset and network performance, Seequent's leading geoprofessional software portfolio, and the *iTwin* Platform for infrastructure digital twins. Bentley Systems employs more than 4,500 colleagues and generates annual revenues of approximately \$1 billion in 186 countries.

[www.bentley.com](http://www.bentley.com)

© 2023 Bentley Systems, Incorporated. Bentley, the Bentley logo, AssetWise, Bentley Raceway and Cable Management, EasyPower, iTwin, MicroStation, OpenBuildings, OpenFlows, OpenPlant, OpenRail, ProjectWise, and Seequent are either registered or unregistered trademarks or service marks of Bentley Systems, Incorporated or one of its direct or indirect wholly owned subsidiaries. All other brands and product names are trademarks of their respective owners.