



*Press Release*

Press Contacts:

Christine Byrne, Bentley Systems

+1 203 805 0432

[Christine.Byrne@bentley.com](mailto:Christine.Byrne@bentley.com)

Follow us on Twitter:

[@BentleySystems](https://twitter.com/BentleySystems)

Press Contact:

Ben Maurer, WSB

763-541-4800

[wsbeng.com](http://wsbeng.com)

## **WSB and Bentley Systems Offer New Digital Construction Management Service Based on SYNCHRO**

*Will Provide Digital Integrator and Advisory Services for Construction Digital Twins Running in Bentley Infrastructure Cloud*

EXTON, Pa. and MINNEAPOLIS – March 13, 2023 – Bentley Systems, Incorporated (Nasdaq: BSY), the *infrastructure engineering software* company, today announced a collaboration initiative with WSB to lead civil infrastructure owners and contractors to adopt and use infrastructure digital twins. WSB has launched a new digital construction management solution and advisory service, based on Bentley’s SYNCHRO, to help the civil infrastructure market overcome challenges of adopting model-based digital workflows and leveraging the power of construction digital twins. WSB is the first firm to join the Bentley Digital Integrator Program for construction to provide programmatic go-to-market support and knowledge transfer to eligible engineering and project delivery firms and system integrators creating and curating digital twins for their clients’ infrastructure assets.

Construction work is too often based on 2D drawings, spreadsheets, and document-based workflows resulting in errors, waste, and rework that cause most projects to be over budget and

schedule. Bentley and WSB will lead firms in transforming construction by adopting technology and digital delivery.

“Owners and construction firms realize that new digital workflows are needed to meet infrastructure demands. Applying these digital workflows successfully requires a deep understanding of technology, processes, and data,” said Carsten Gerke, senior vice president of strategic partnerships with Bentley Systems. “The Bentley Digital Integrator Program is built around combining technology with subject matter expertise for improved infrastructure. WSB joining the program provides a leapfrog opportunity for all our transportation users.”

Through a combination of industry-leading software, expertise, and innovation, Bentley and WSB’s digital construction management initiative is helping to shape the way infrastructure projects are delivered. Key services include enabling a single source of truth by connecting project, contract, and document management to the future of design—a 3D/4D/5D constructable model—as well as the ability to create constructable models from current 2D plan sets, which allows the transition to a single source of truth for all stakeholders. This initiative is committed to putting the industry-leading model-based construction management tool in the hands of those who build the work. WSB promotes advanced project delivery and knows how to apply the right technology and expertise to support their clients’ aspirations for a digital future.

“WSB is committed to delivering innovative, reliable, and secure solutions through the use of advanced technology. We believe the successful deployment of an operational 3D model drives transparency, maximizes return on investment, makes possible true lifecycle planning, and drives collaboration to connect and align all stakeholders,” said Jon Chiglo, chief operating officer of WSB. “We have an entire organization that is leading, creating, and innovating into our digital future. Our partnership with Bentley is an important part of this vision and we are excited to bring this digital construction management service to market.”

SYNCHRO, Bentley’s construction management software that supports the entire civil construction lifecycle with simple office-to-field workflows and gives firms insight into project performance, productivity, and financial health, is the foundation for WSB’s offering. SYNCHRO is the construction service of the Bentley Infrastructure Cloud leveraging digital twin technologies, powered by iTwin.

Together, Bentley and WSB are meeting the market where it is and providing the tools, training, education, and support required to make the digital leap. Project teams will realize the value of model-based digital delivery for better project efficiency and outcomes. Civil infrastructure owners and contractors will overcome barriers to technology adoption to drive efficiencies from preconstruction planning through construction execution. Skills will improve as more projects adopt model-based delivery, resulting in it becoming the common standard.

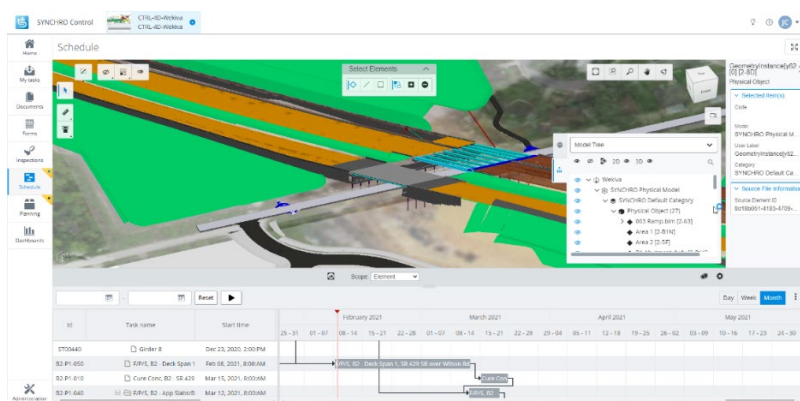
“Owners and construction firms realize that new digital workflows are needed to meet infrastructure demands, but they often face issues when determining how best to adopt technology,” said Rich Humphrey, vice president of construction with Bentley. “In civil infrastructure, they also face unique challenges related to the nature of the design information they receive, and the spatial logistics involved. Bentley with WSB is the perfect combination to enable project teams to resolve adoption hurdles and ensure that technology results in a step function improvement in the way projects are delivered from design through construction execution.”

[Image 1:](#)



SYNCHRO simplifies the delivery of infrastructure construction projects. *Image courtesy of WSB.*

[Image 2:](#)



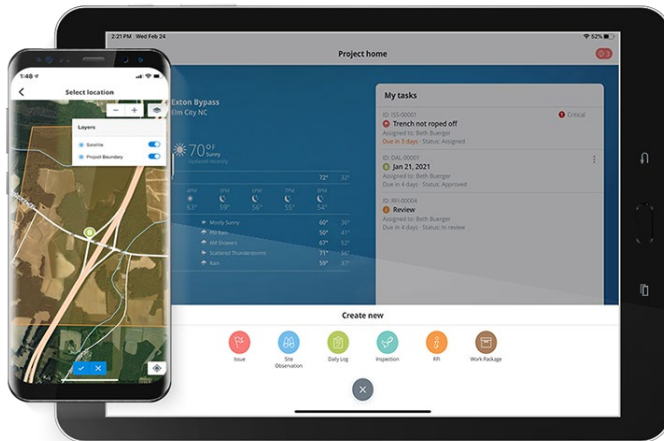
Access, manage, collaborate, and analyze project data all in one place with SYNCHRO. *Image courtesy of Bentley Systems.*

[Image 3:](#)



Digital twin of a bridge. *Image courtesy of Bentley Systems.*

[Image 4:](#)



SYNCHRO lets you manage tasks and data in context to the project with dashboards, map views, and 2D and 4D models on desktop, mobile, or wearables. *Image courtesy of Bentley Systems.*

##

## About Bentley Systems

Bentley Systems (Nasdaq: BSY) is the *infrastructure engineering software* company. We provide innovative software to advance the world's infrastructure – sustaining both the global economy and environment. Our industry-leading software solutions are used by professionals, and organizations of every size, for the design, construction, and operations of roads and bridges, rail and transit, water and wastewater, public works and utilities, buildings and campuses, mining, and industrial facilities. Our offerings, powered by the *iTwin* Platform for infrastructure digital twins, include *MicroStation* and *Bentley Open* applications for modeling and simulation, *Seequent's* software for geoprofessionals, and *Bentley Infrastructure Cloud* encompassing *ProjectWise* for project delivery, *SYNCHRO* for construction management, and *AssetWise* for asset operations. Bentley Systems' 5,000 colleagues generate annual revenues of more than \$1 billion in 194 countries.

[www.bentley.com](http://www.bentley.com)

## About WSB

WSB, a design and consulting firm providing engineering, planning, environmental and construction services. Its staff improves the way people engage with communities, transportation, infrastructure, energy and our environment. WSB offers services in more than 30-complementary areas to seamlessly integrate planning, design and implementation. Its coast-to-coast client base is served from 15 offices in five states. WSB's staff is inspired to look beyond today and capitalize on the opportunities of tomorrow. Guided by a strong vision and an authentic passion, WSB is a company that strives to forge ahead. To learn more, visit

[wsbeng.com](http://wsbeng.com).

© 2023 Bentley Systems, Incorporated. Bentley, the Bentley logo, Bentley Infrastructure Cloud, AssetWise, iTwin, MicroStation, ProjectWise, Seequent, and SYNCHRO are either registered or unregistered trademarks or service marks of Bentley Systems, Incorporated or one of its direct or indirect wholly owned subsidiaries. All other brands and product names are trademarks of their respective owners.